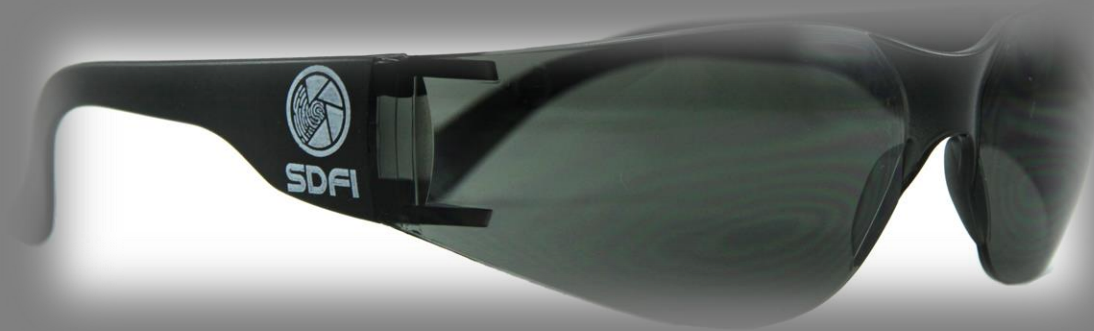


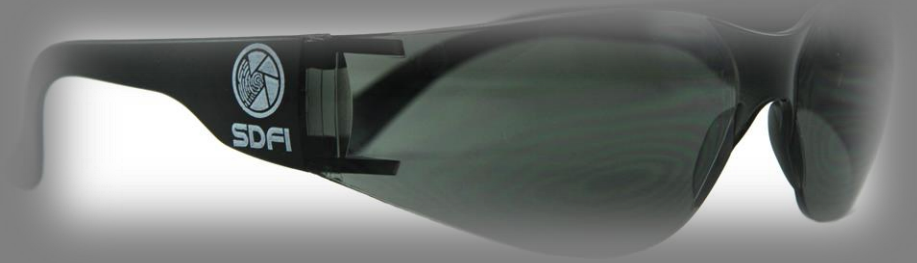
Filters “ONLY” help you see better, like a pair of sunglasses.

- Filters do NOT determine intent or cause.
- Filters do NOT determine consent or non-consent.
- Filters do NOT determine guilt or innocence.
- Filters do NOT diagnose or analyze.
- Filters do NOT distinguish right from wrong.



Filters “**ONLY**” help you see better, like a pair of sunglasses.

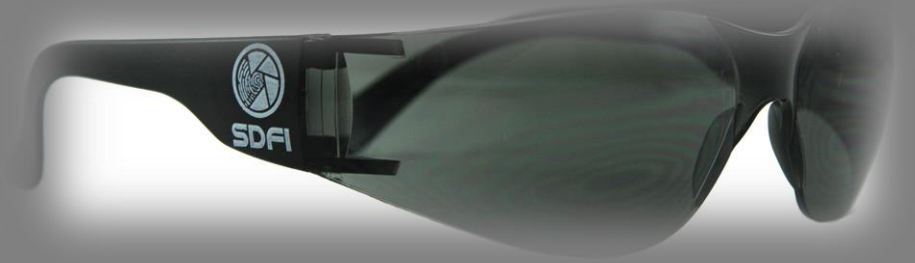
- Filters do **NOT** determine intent or cause.
- Filters do **NOT** determine consent or non-consent.
- Filters do **NOT** determine guilt or innocence.
- Filters do **NOT** diagnose or analyze.
- Filters do **NOT** distinguish right from wrong.





Filters “**ONLY**” help you see better, like a pair of sunglasses.

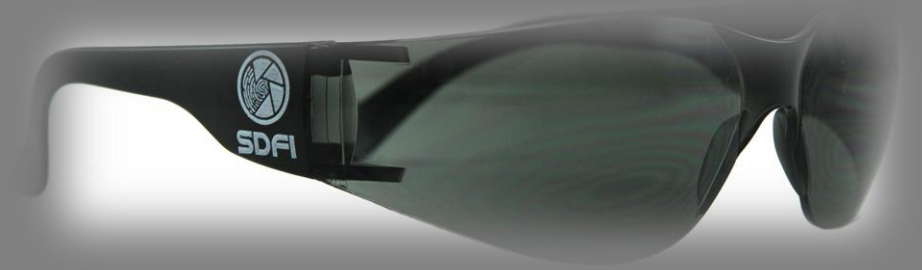
- Filters do **NOT** determine intent or cause.
- Filters do **NOT** determine consent or non-consent.
- Filters do **NOT** determine guilt or innocence.
- Filters do **NOT** diagnose or analyze.
- Filters do **NOT** distinguish right from wrong.





Filters “**ONLY**” help you see better, like a pair of sunglasses.

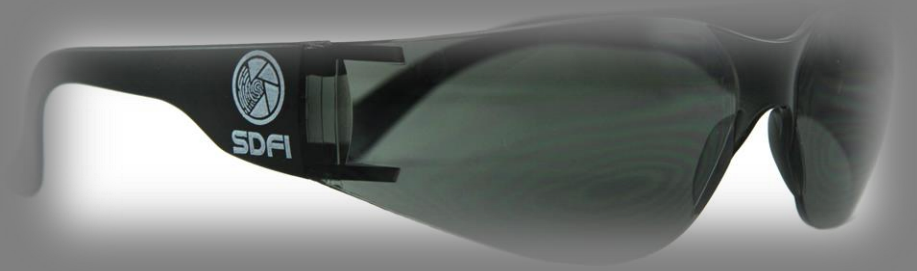
- Filters do **NOT** determine intent or cause.
- Filters do **NOT** determine consent or non-consent.
- Filters do **NOT** determine guilt or innocence.
- Filters do **NOT** diagnose or analyze.
- Filters do **NOT** distinguish right from wrong.





Filters “**ONLY**” help you see better, like a pair of sunglasses.

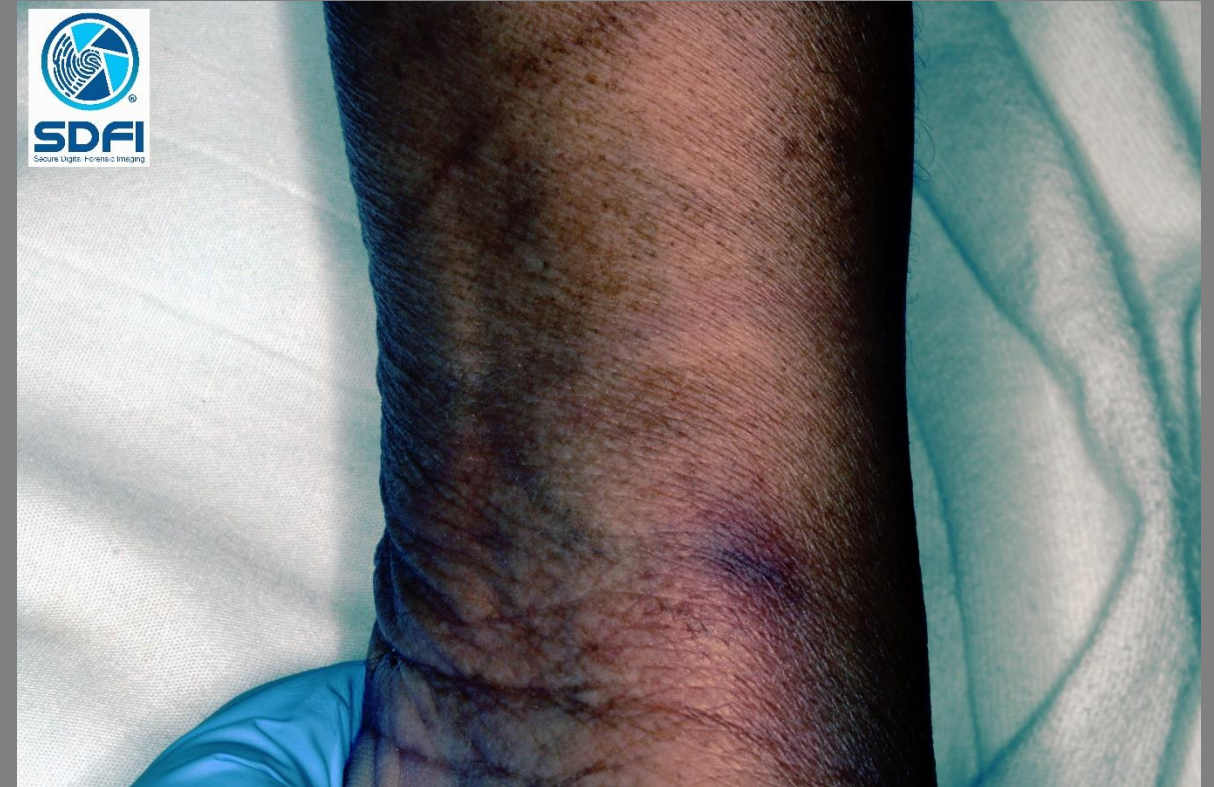
- Filters do **NOT** determine intent or cause.
- Filters do **NOT** determine consent or non-consent.
- Filters do **NOT** determine guilt or innocence.
- Filters do **NOT** diagnose or analyze.
- Filters do **NOT** distinguish right from wrong.





Filters “**ONLY**” help you see better, like a pair of sunglasses.

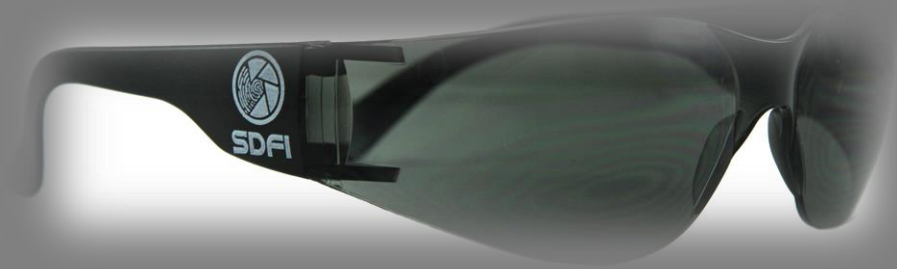
- Filters do **NOT** determine intent or cause.
- Filters do **NOT** determine consent or non-consent.
- Filters do **NOT** determine guilt or innocence.
- Filters do **NOT** diagnose or analyze.
- Filters do **NOT** distinguish right from wrong.





Filters “**ONLY**” help you see better, like a pair of sunglasses.

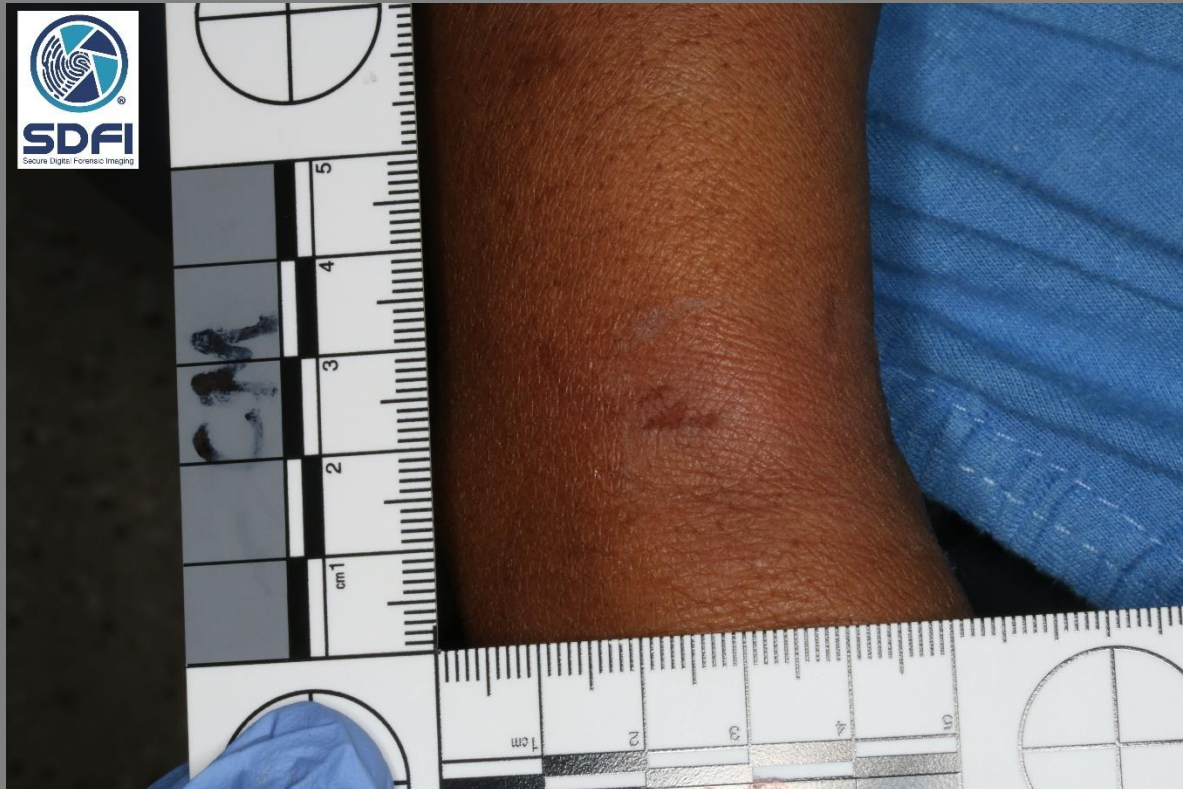
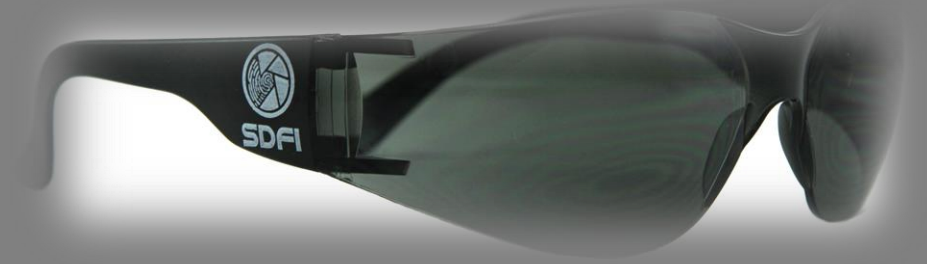
- Filters do **NOT** determine intent or cause.
- Filters do **NOT** determine consent or non-consent.
- Filters do **NOT** determine guilt or innocence.
- Filters do **NOT** diagnose or analyze.
- Filters do **NOT** distinguish right from wrong.





Filters “**ONLY**” help you see better, like a pair of sunglasses.

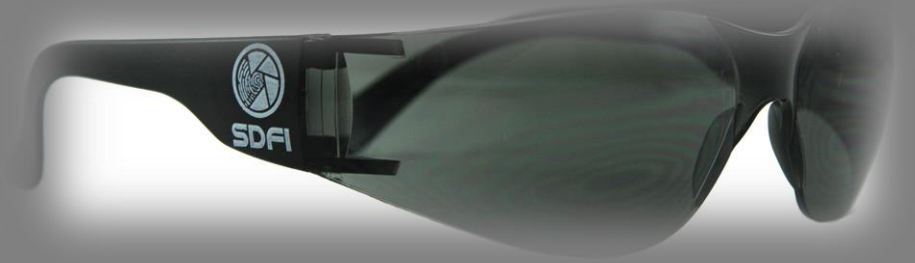
- Filters do **NOT** determine intent or cause.
- Filters do **NOT** determine consent or non-consent.
- Filters do **NOT** determine guilt or innocence.
- Filters do **NOT** diagnose or analyze.
- Filters do **NOT** distinguish right from wrong.





Filters “**ONLY**” help you see better, like a pair of sunglasses.

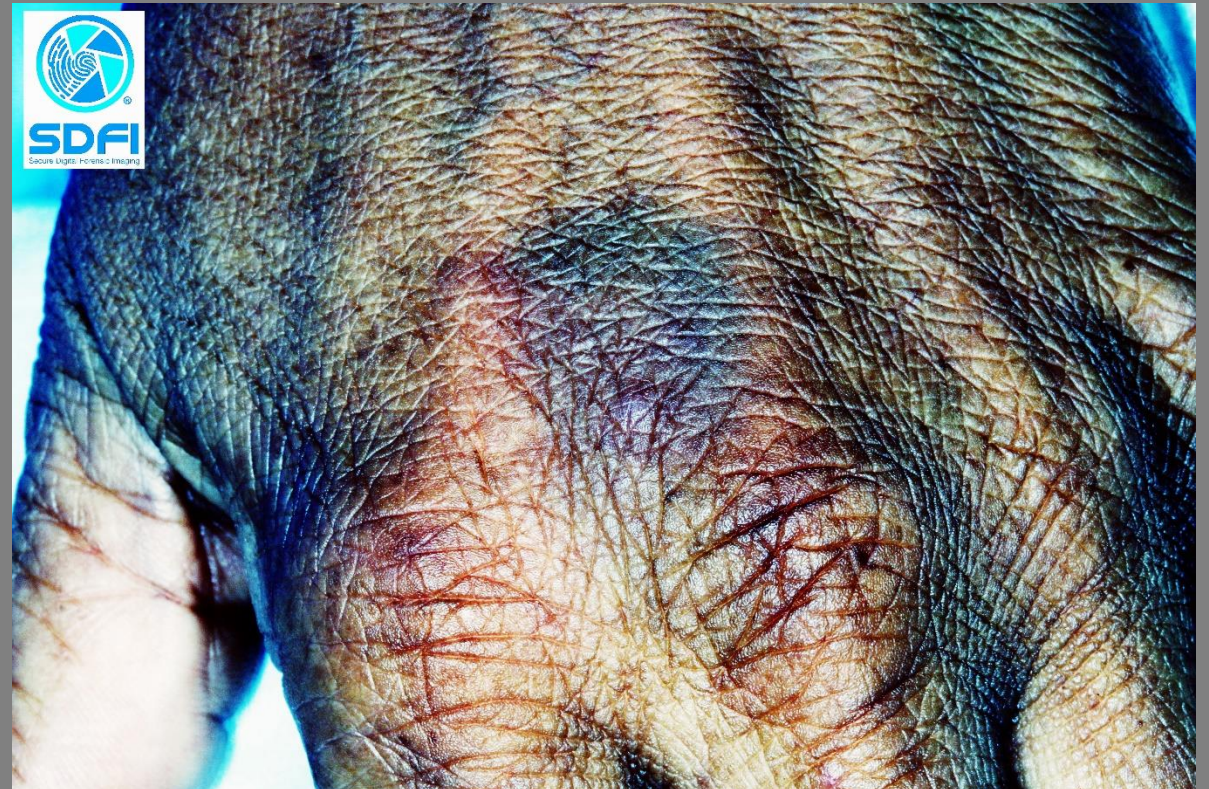
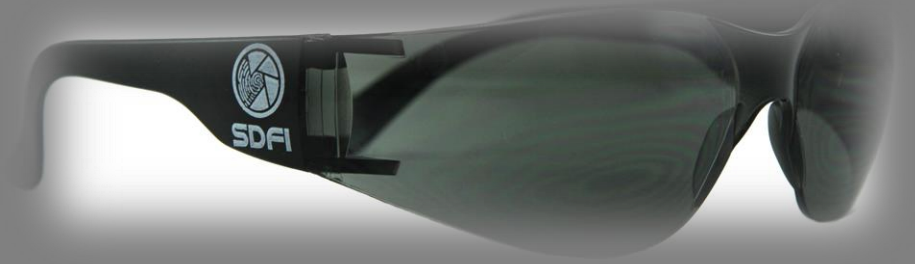
- Filters do **NOT** determine intent or cause.
- Filters do **NOT** determine consent or non-consent.
- Filters do **NOT** determine guilt or innocence.
- Filters do **NOT** diagnose or analyze.
- Filters do **NOT** distinguish right from wrong.





Filters “**ONLY**” help you see better, like a pair of sunglasses.

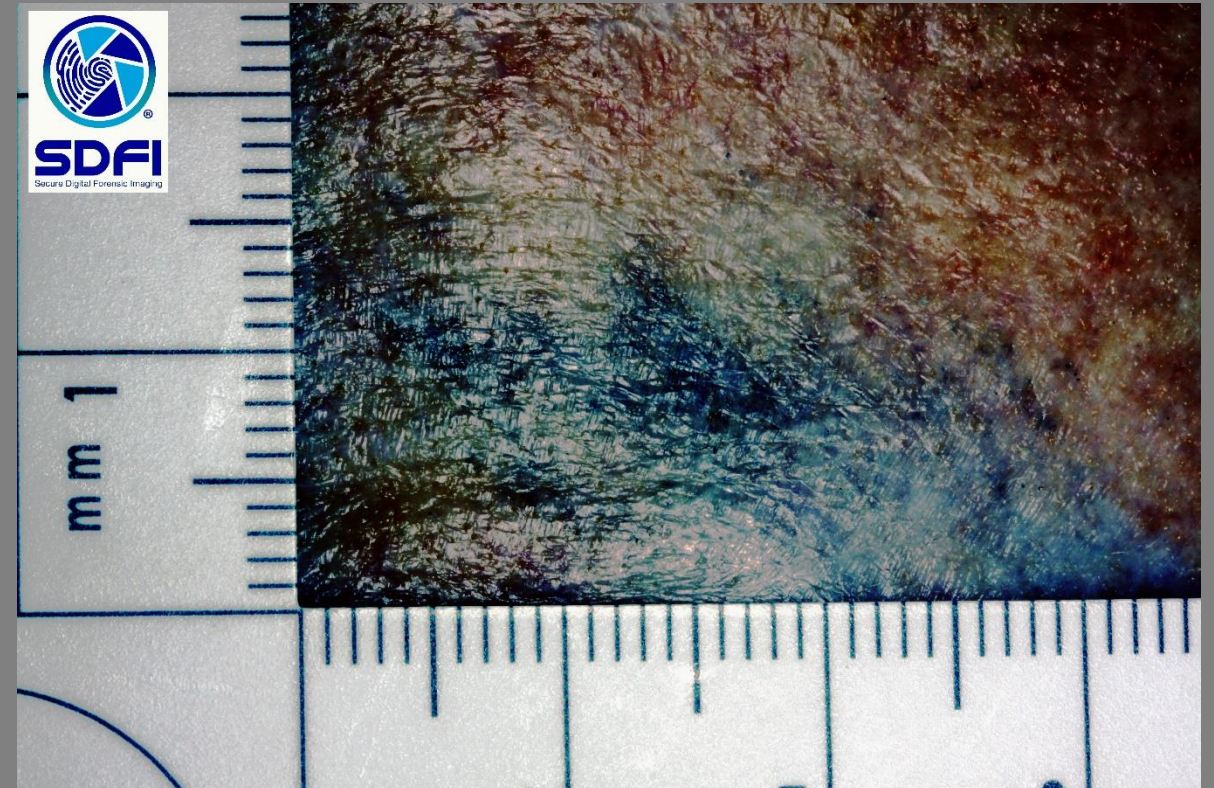
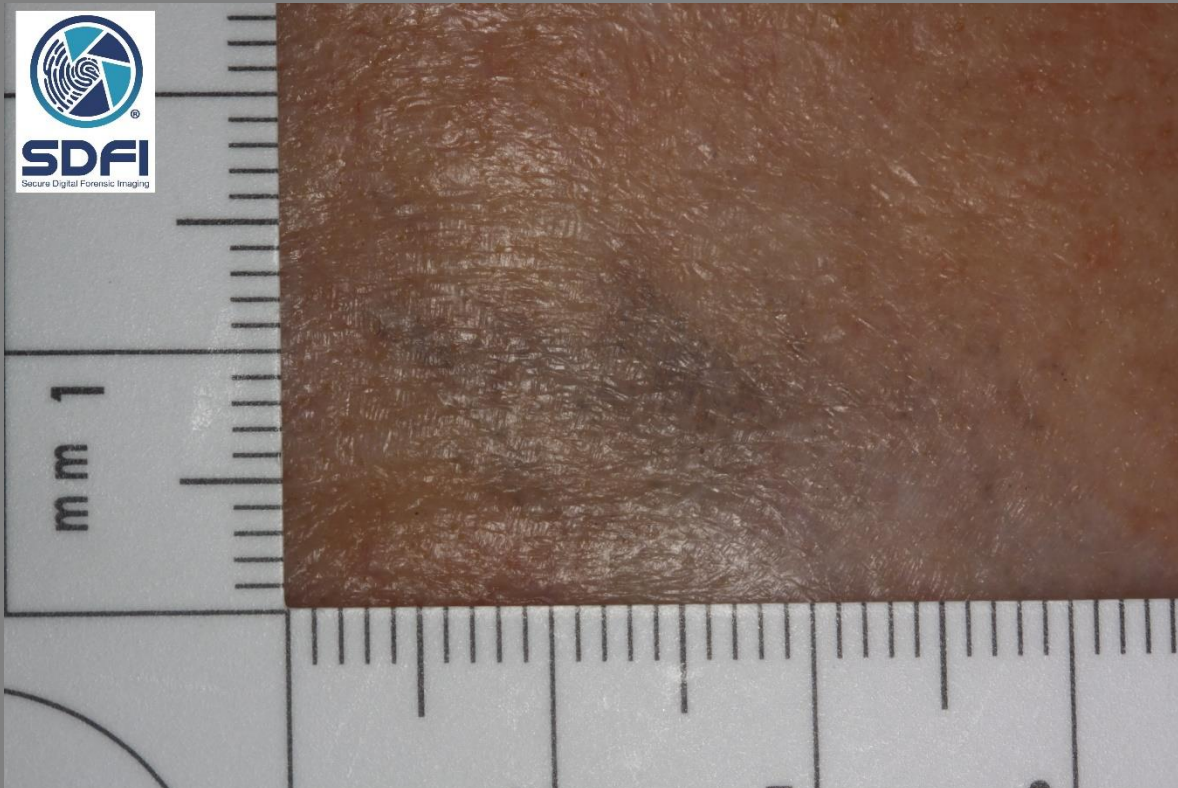
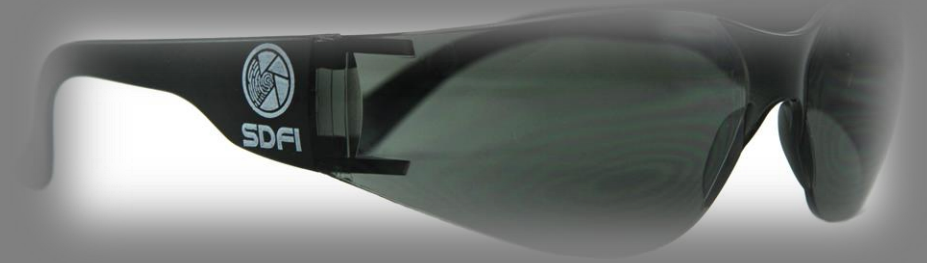
- Filters do **NOT** determine intent or cause.
- Filters do **NOT** determine consent or non-consent.
- Filters do **NOT** determine guilt or innocence.
- Filters do **NOT** diagnose or analyze.
- Filters do **NOT** distinguish right from wrong.





Filters “**ONLY**” help you see better, like a pair of sunglasses.

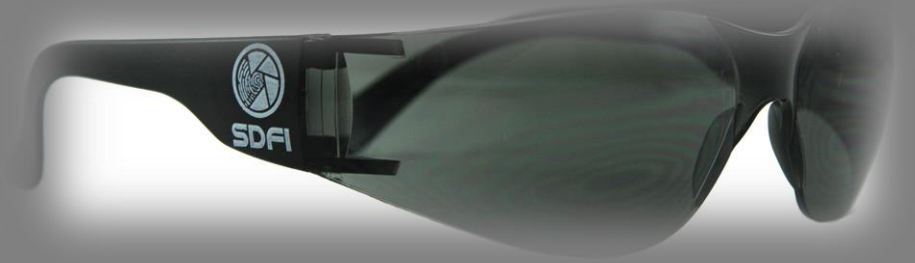
- Filters do **NOT** determine intent or cause.
- Filters do **NOT** determine consent or non-consent.
- Filters do **NOT** determine guilt or innocence.
- Filters do **NOT** diagnose or analyze.
- Filters do **NOT** distinguish right from wrong.





Filters “**ONLY**” help you see better, like a pair of sunglasses.

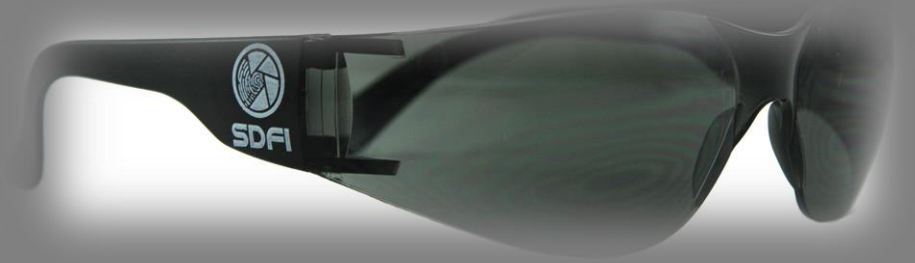
- Filters do **NOT** determine intent or cause.
- Filters do **NOT** determine consent or non-consent.
- Filters do **NOT** determine guilt or innocence.
- Filters do **NOT** diagnose or analyze.
- Filters do **NOT** distinguish right from wrong.





Filters “**ONLY**” help you see better, like a pair of sunglasses.

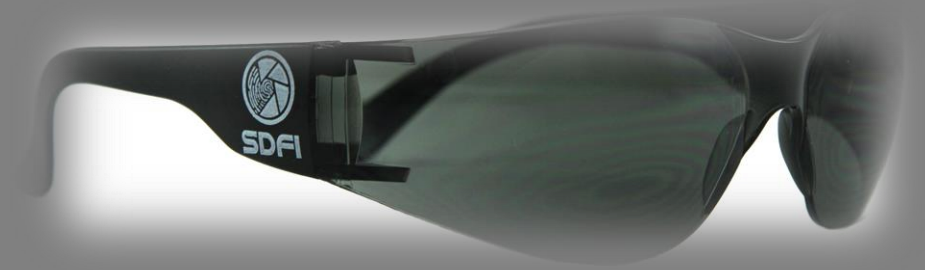
- Filters do **NOT** determine intent or cause.
- Filters do **NOT** determine consent or non-consent.
- Filters do **NOT** determine guilt or innocence.
- Filters do **NOT** diagnose or analyze.
- Filters do **NOT** distinguish right from wrong.





Filters “**ONLY**” help you see better, like a pair of sunglasses.

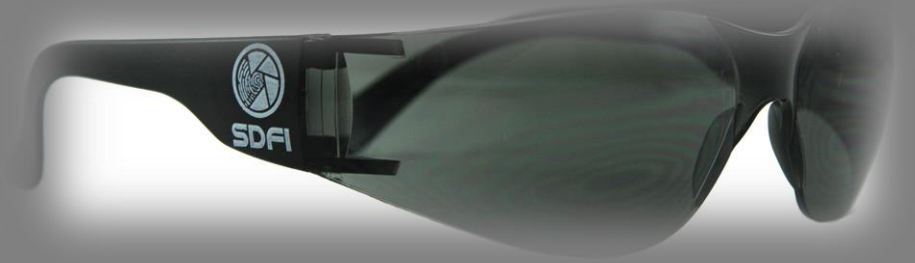
- Filters do **NOT** determine intent or cause.
- Filters do **NOT** determine consent or non-consent.
- Filters do **NOT** determine guilt or innocence.
- Filters do **NOT** diagnose or analyze.
- Filters do **NOT** distinguish right from wrong.





Filters “**ONLY**” help you see better, like a pair of sunglasses.

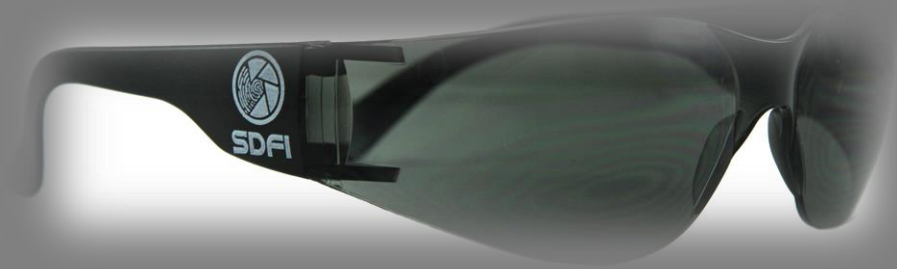
- Filters do **NOT** determine intent or cause.
- Filters do **NOT** determine consent or non-consent.
- Filters do **NOT** determine guilt or innocence.
- Filters do **NOT** diagnose or analyze.
- Filters do **NOT** distinguish right from wrong.





Filters “**ONLY**” help you see better, like a pair of sunglasses.

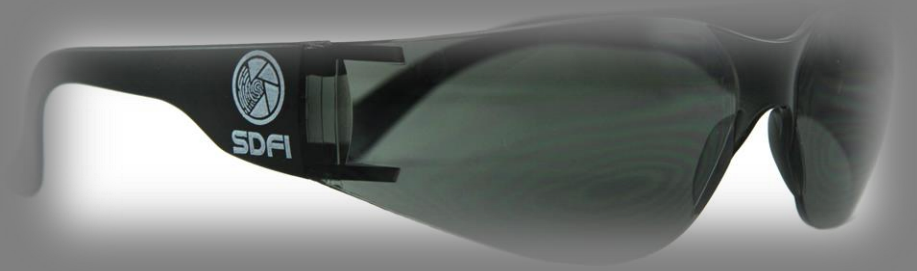
- Filters do **NOT** determine intent or cause.
- Filters do **NOT** determine consent or non-consent.
- Filters do **NOT** determine guilt or innocence.
- Filters do **NOT** diagnose or analyze.
- Filters do **NOT** distinguish right from wrong.





Filters “**ONLY**” help you see better, like a pair of sunglasses.

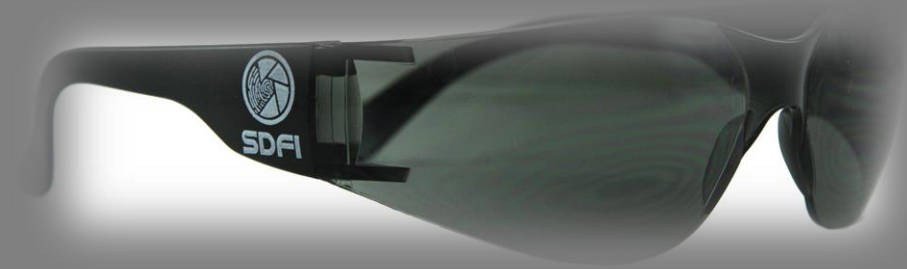
- Filters do **NOT** determine intent or cause.
- Filters do **NOT** determine consent or non-consent.
- Filters do **NOT** determine guilt or innocence.
- Filters do **NOT** diagnose or analyze.
- Filters do **NOT** distinguish right from wrong.





Filters “**ONLY**” help you see better, like a pair of sunglasses.

- Filters do **NOT** determine intent or cause.
- Filters do **NOT** determine consent or non-consent.
- Filters do **NOT** determine guilt or innocence.
- Filters do **NOT** diagnose or analyze.
- Filters do **NOT** distinguish right from wrong.





Filters “**ONLY**” help you see better, like a pair of sunglasses.

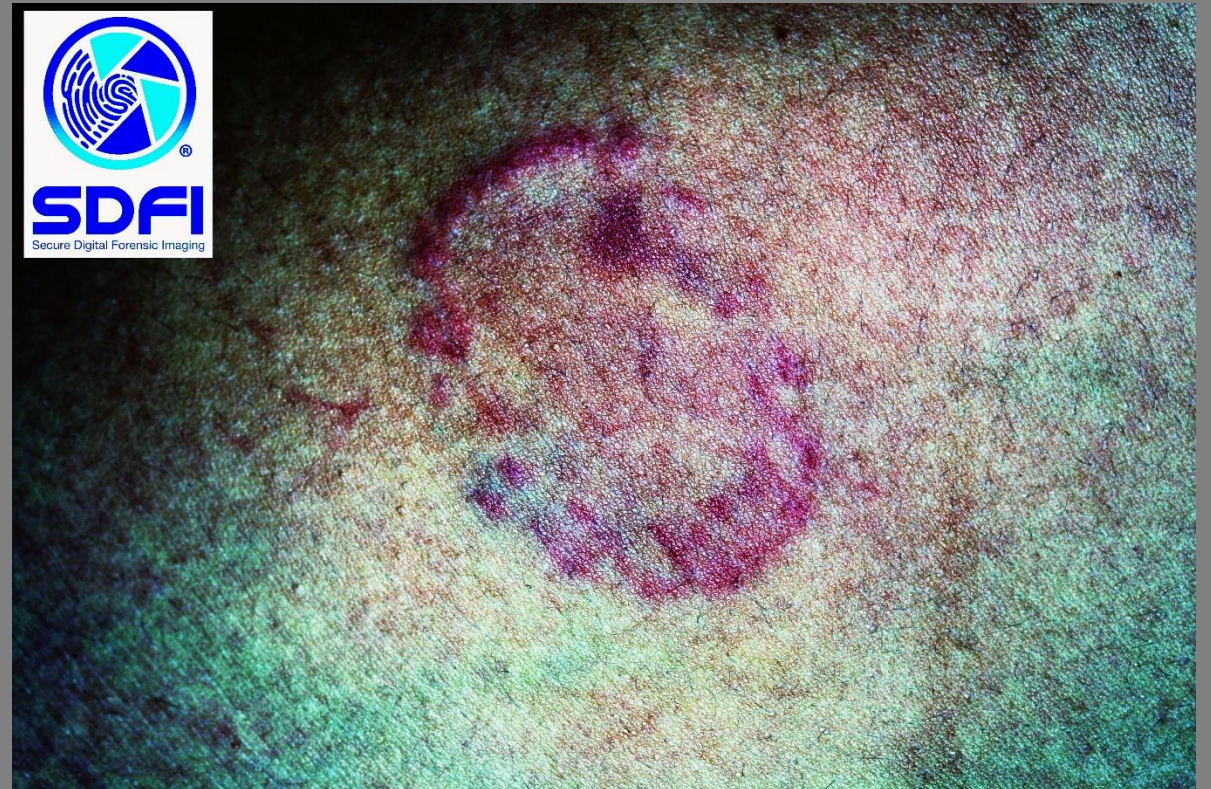
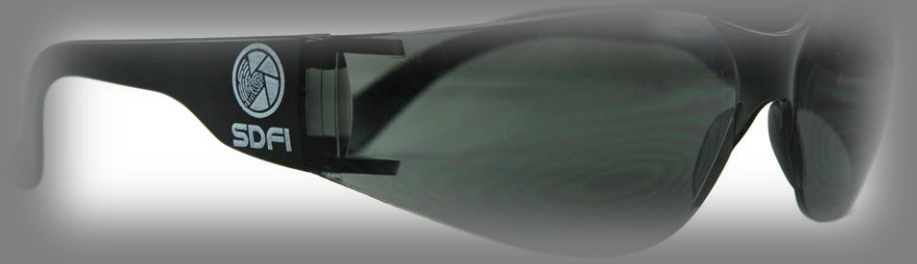
- Filters do **NOT** determine intent or cause.
- Filters do **NOT** determine consent or non-consent.
- Filters do **NOT** determine guilt or innocence.
- Filters do **NOT** diagnose or analyze.
- Filters do **NOT** distinguish right from wrong.





Filters “**ONLY**” help you see better, like a pair of sunglasses.

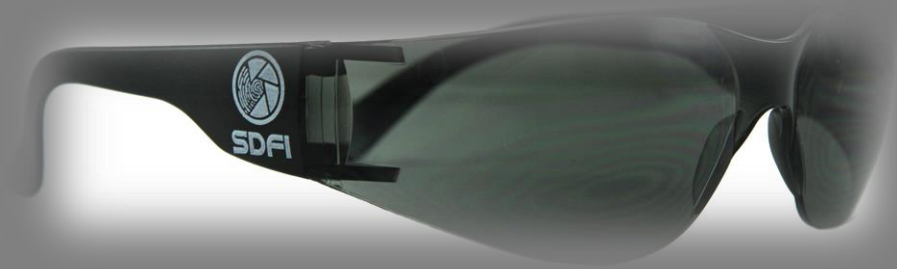
- Filters do **NOT** determine intent or cause.
- Filters do **NOT** determine consent or non-consent.
- Filters do **NOT** determine guilt or innocence.
- Filters do **NOT** diagnose or analyze.
- Filters do **NOT** distinguish right from wrong.





Filters “**ONLY**” help you see better, like a pair of sunglasses.

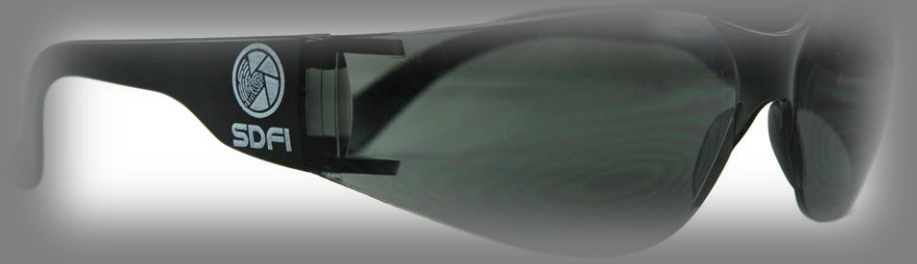
- Filters do **NOT** determine intent or cause.
- Filters do **NOT** determine consent or non-consent.
- Filters do **NOT** determine guilt or innocence.
- Filters do **NOT** diagnose or analyze.
- Filters do **NOT** distinguish right from wrong.





Filters “**ONLY**” help you see better, like a pair of sunglasses.

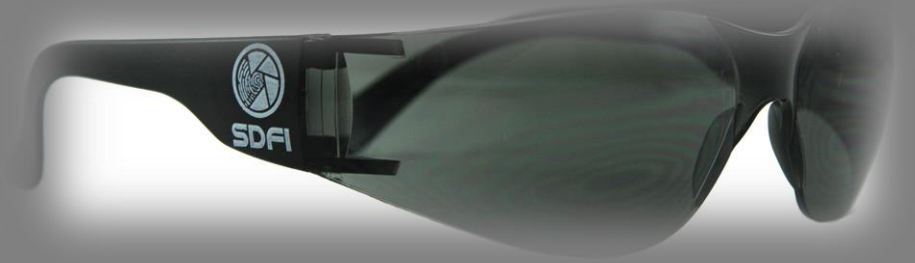
- Filters do **NOT** determine intent or cause.
- Filters do **NOT** determine consent or non-consent.
- Filters do **NOT** determine guilt or innocence.
- Filters do **NOT** diagnose or analyze.
- Filters do **NOT** distinguish right from wrong.





Filters “**ONLY**” help you see better, like a pair of sunglasses.

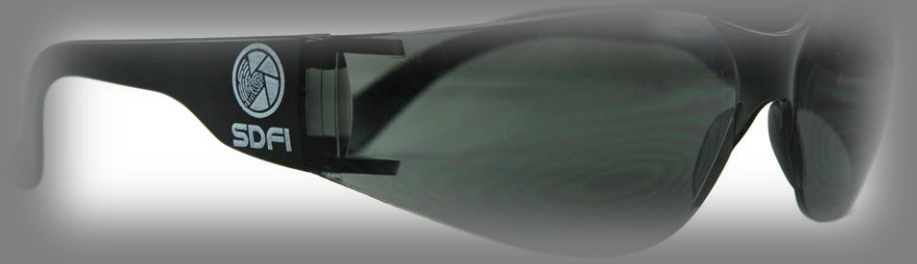
- Filters do **NOT** determine intent or cause.
- Filters do **NOT** determine consent or non-consent.
- Filters do **NOT** determine guilt or innocence.
- Filters do **NOT** diagnose or analyze.
- Filters do **NOT** distinguish right from wrong.





Filters “**ONLY**” help you see better, like a pair of sunglasses.

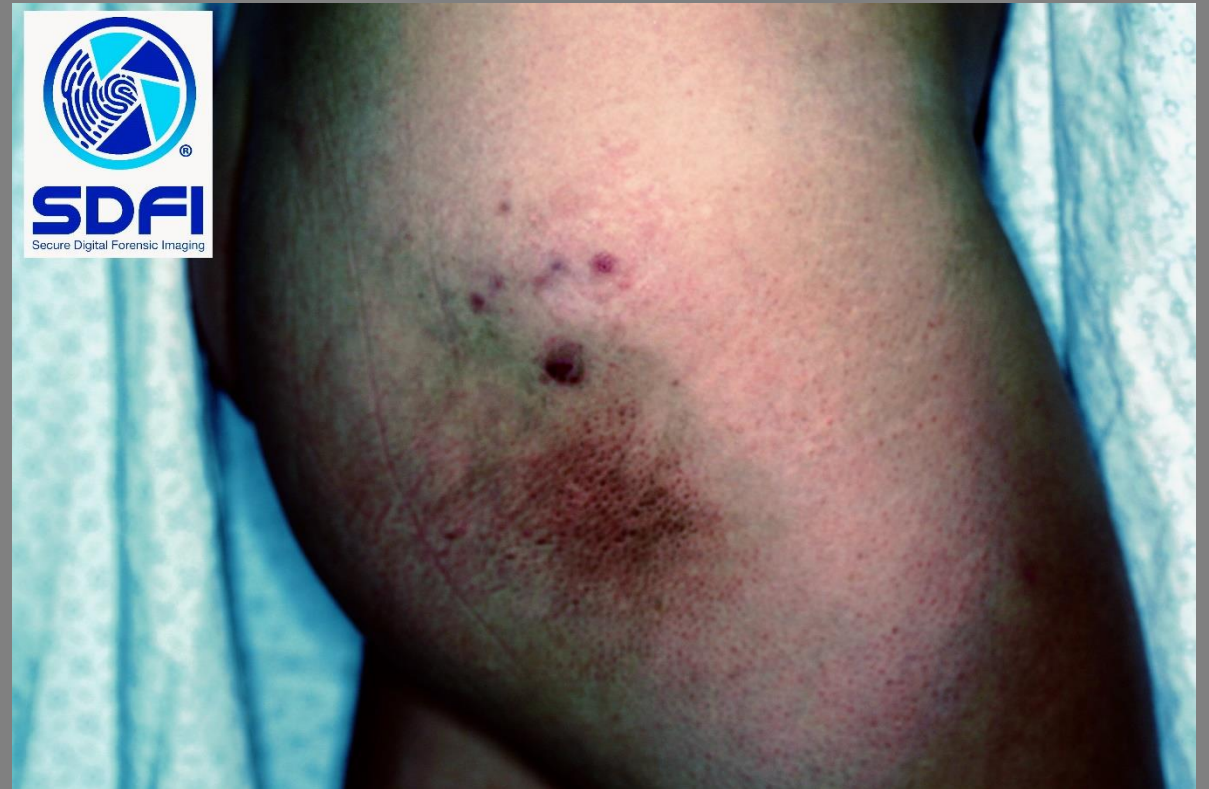
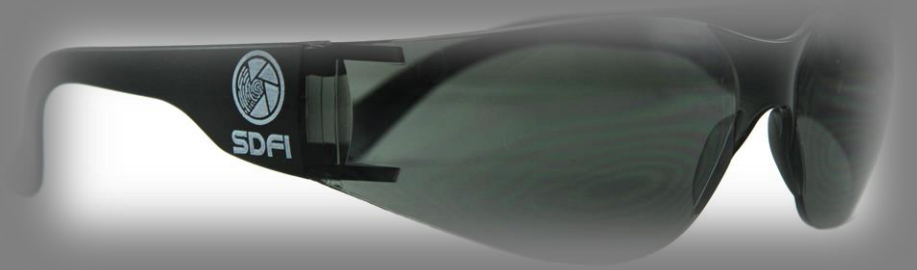
- Filters do **NOT** determine intent or cause.
- Filters do **NOT** determine consent or non-consent.
- Filters do **NOT** determine guilt or innocence.
- Filters do **NOT** diagnose or analyze.
- Filters do **NOT** distinguish right from wrong.





Filters “**ONLY**” help you see better, like a pair of sunglasses.

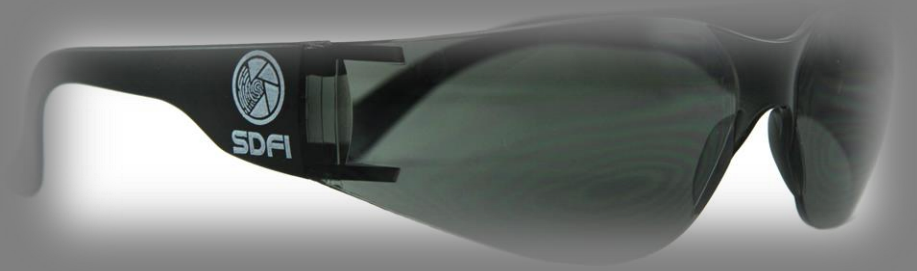
- Filters do **NOT** determine intent or cause.
- Filters do **NOT** determine consent or non-consent.
- Filters do **NOT** determine guilt or innocence.
- Filters do **NOT** diagnose or analyze.
- Filters do **NOT** distinguish right from wrong.





Filters “**ONLY**” help you see better, like a pair of sunglasses.

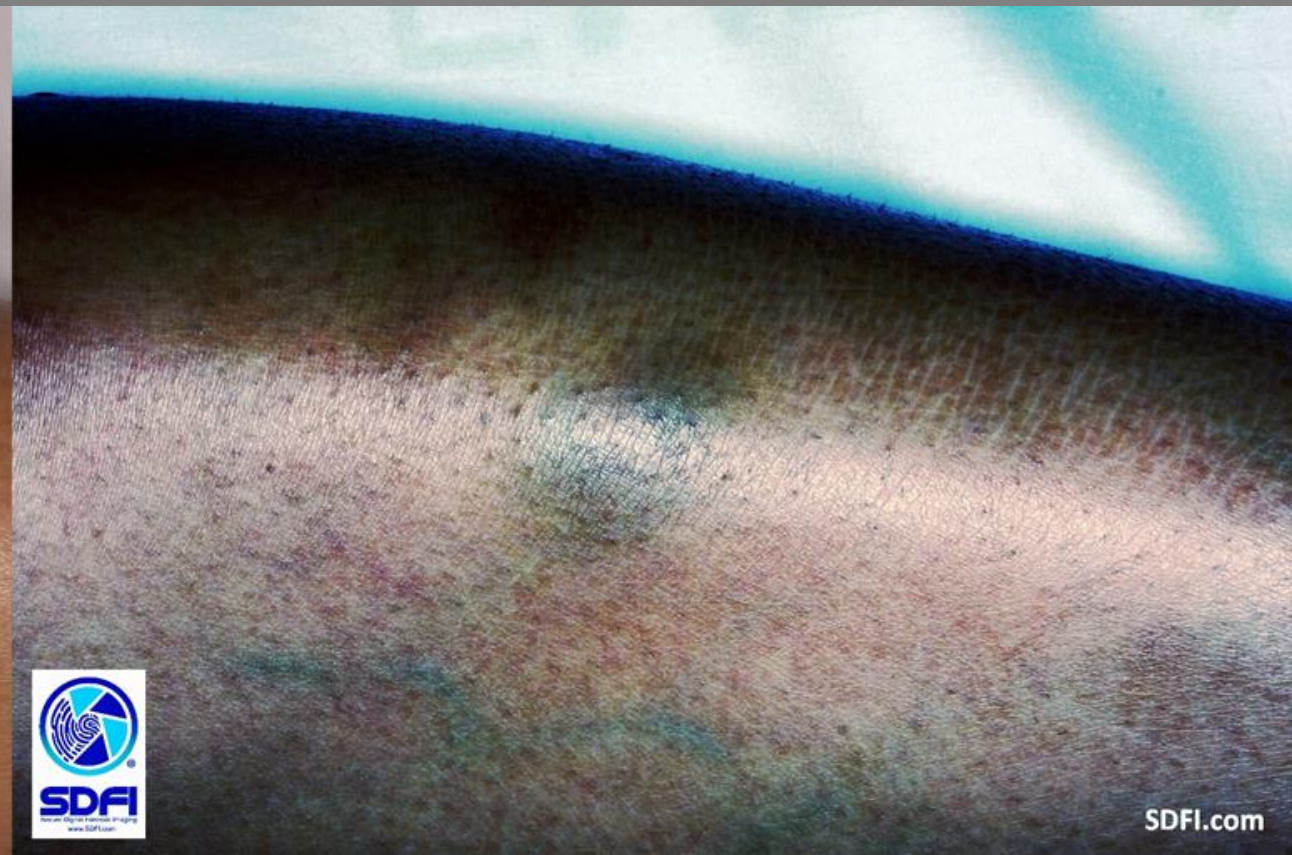
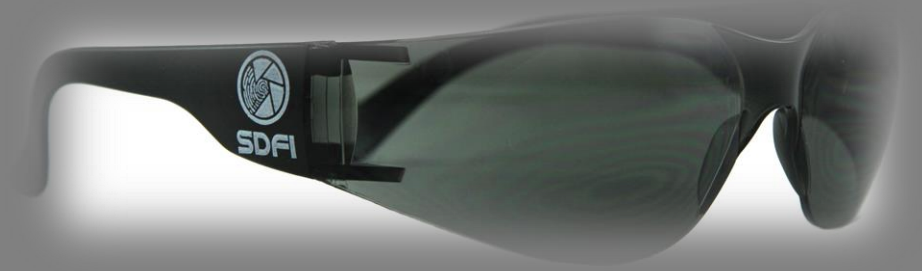
- Filters do **NOT** determine intent or cause.
- Filters do **NOT** determine consent or non-consent.
- Filters do **NOT** determine guilt or innocence.
- Filters do **NOT** diagnose or analyze.
- Filters do **NOT** distinguish right from wrong.





Filters “**ONLY**” help you see better, like a pair of sunglasses.

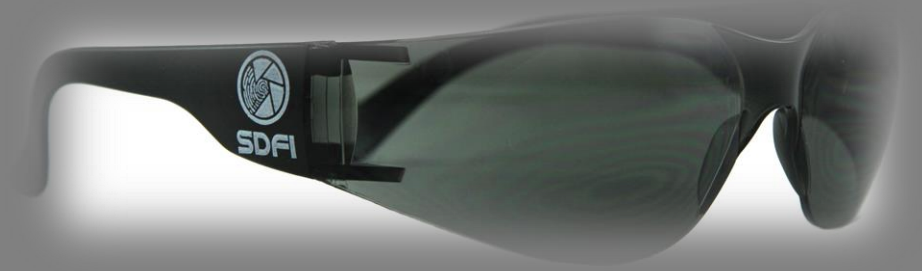
- Filters do **NOT** determine intent or cause.
- Filters do **NOT** determine consent or non-consent.
- Filters do **NOT** determine guilt or innocence.
- Filters do **NOT** diagnose or analyze.
- Filters do **NOT** distinguish right from wrong.





Filters “**ONLY**” help you see better, like a pair of sunglasses.

- Filters do **NOT** determine intent or cause.
- Filters do **NOT** determine consent or non-consent.
- Filters do **NOT** determine guilt or innocence.
- Filters do **NOT** diagnose or analyze.
- Filters do **NOT** distinguish right from wrong.



SDFI JPG Image



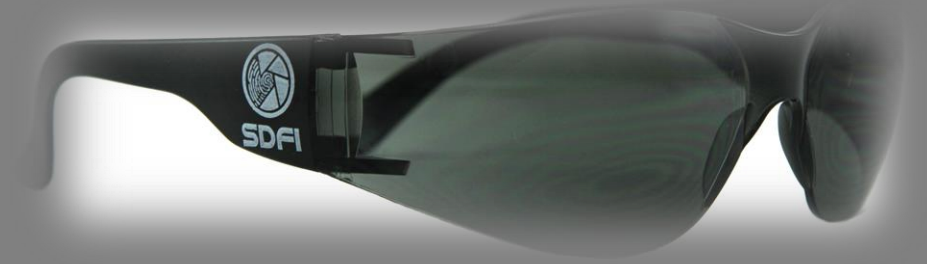
Viewed Through SDFI's Negative Invert Filter





Filters “**ONLY**” help you see better, like a pair of sunglasses.

- Filters do **NOT** determine intent or cause.
- Filters do **NOT** determine consent or non-consent.
- Filters do **NOT** determine guilt or innocence.
- Filters do **NOT** diagnose or analyze.
- Filters do **NOT** distinguish right from wrong.

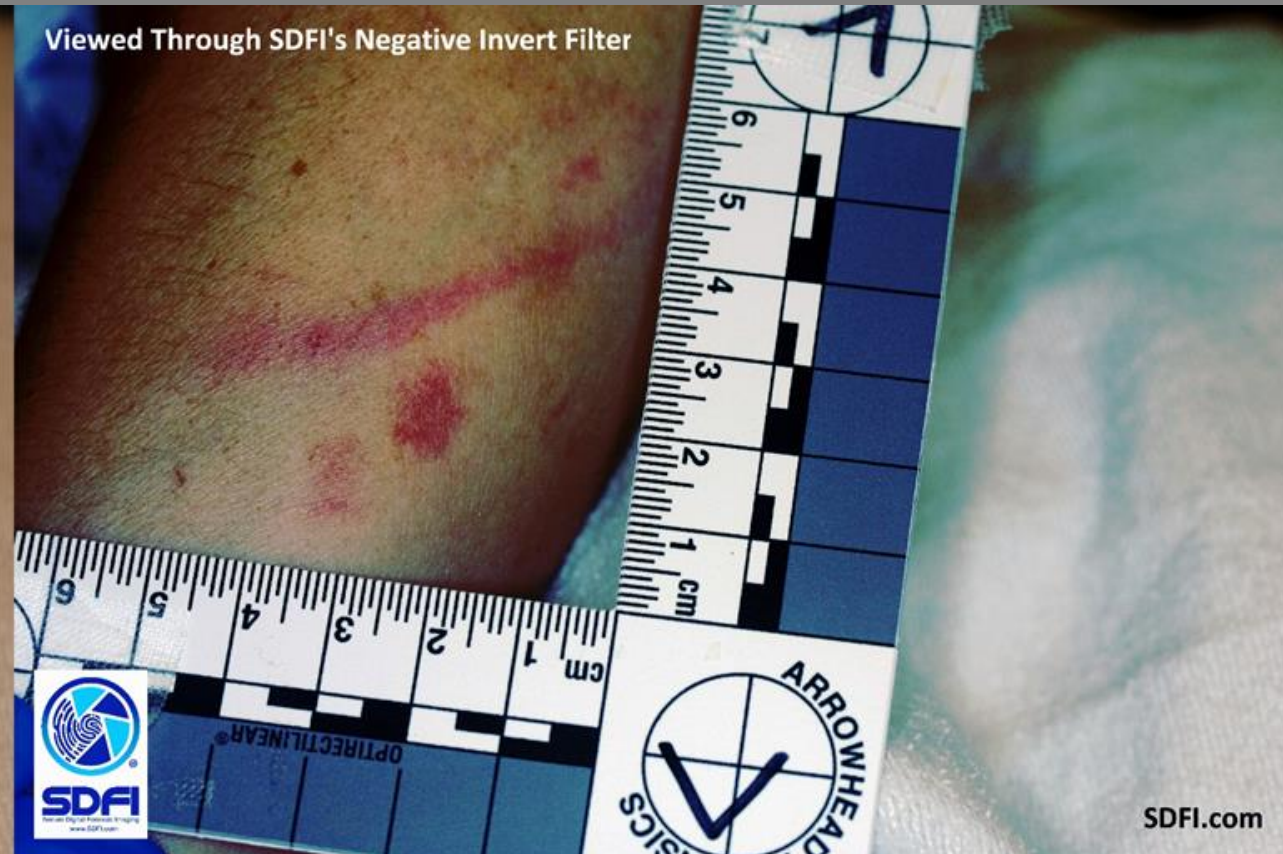


SDFI JPG Image



SDFI.com

Viewed Through SDFI's Negative Invert Filter

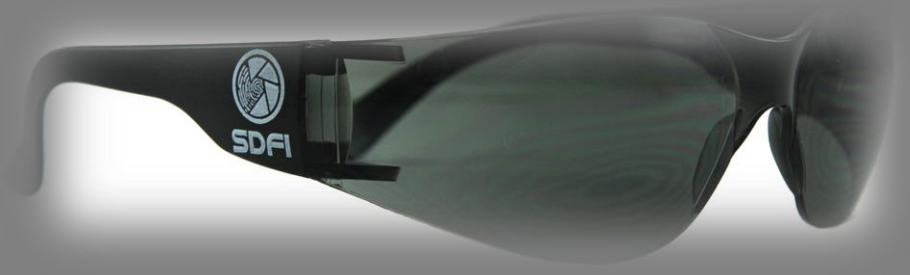


SDFI.com



Filters "**ONLY**" help you see better, like a pair of sunglasses.

- Filters do **NOT** determine intent or cause.
- Filters do **NOT** determine consent or non-consent.
- Filters do **NOT** determine guilt or innocence.
- Filters do **NOT** diagnose or analyze.
- Filters do **NOT** distinguish right from wrong.



SDFI JPG Image

SDFI.com



Viewed Through SDFI's Negative Invert Filter

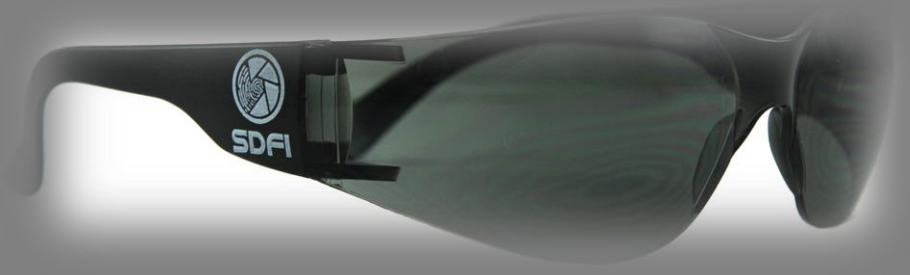
SDFI.com





Filters “**ONLY**” help you see better, like a pair of sunglasses.

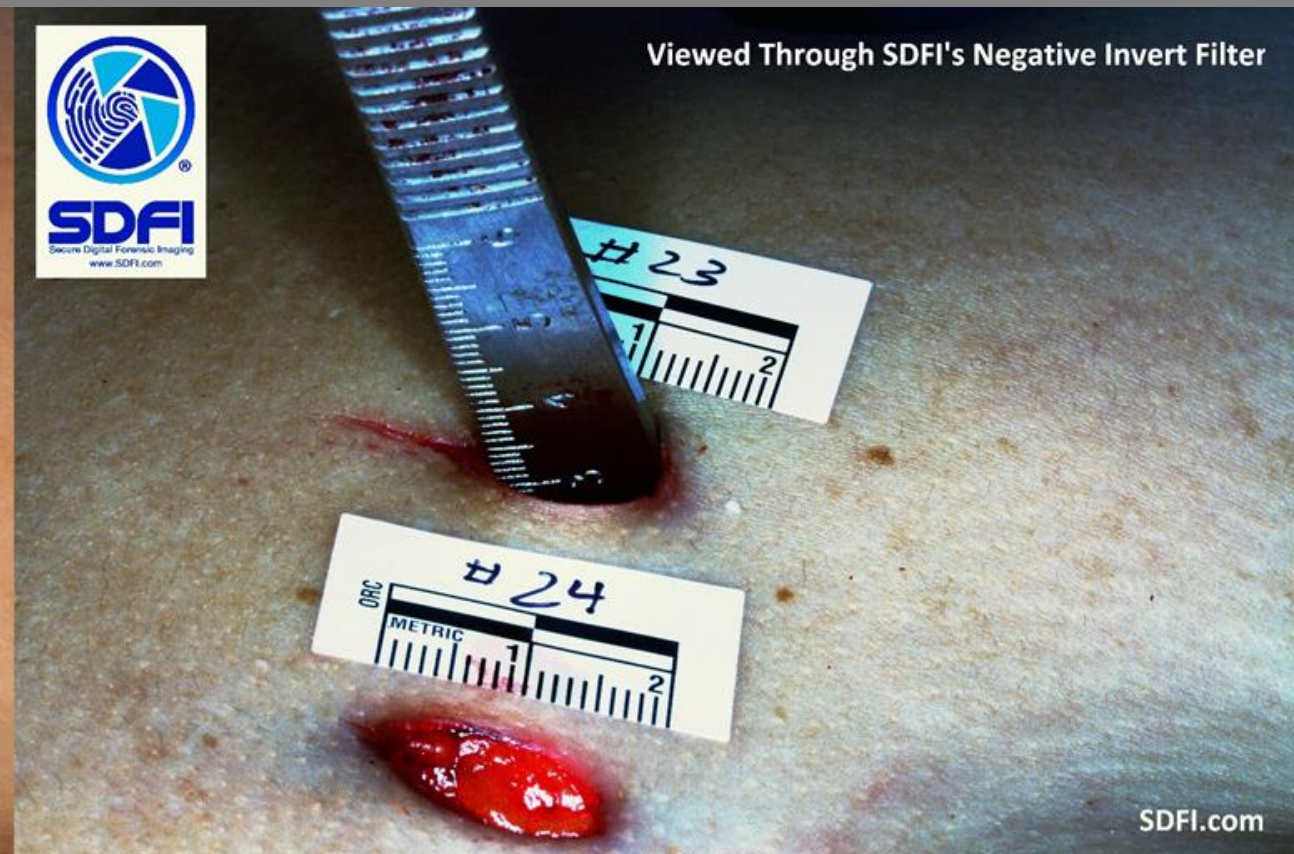
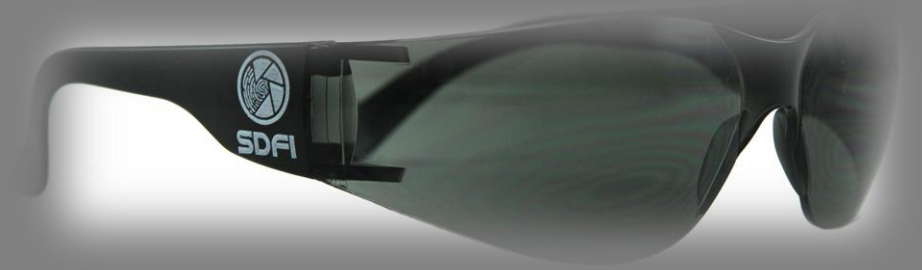
- Filters do **NOT** determine intent or cause.
- Filters do **NOT** determine consent or non-consent.
- Filters do **NOT** determine guilt or innocence.
- Filters do **NOT** diagnose or analyze.
- Filters do **NOT** distinguish right from wrong.





Filters “**ONLY**” help you see better, like a pair of sunglasses.

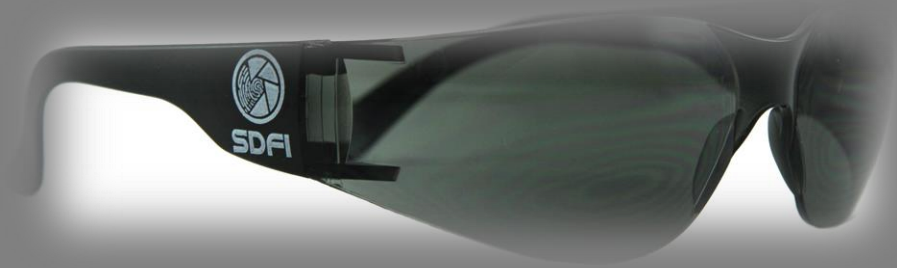
- Filters do **NOT** determine intent or cause.
- Filters do **NOT** determine consent or non-consent.
- Filters do **NOT** determine guilt or innocence.
- Filters do **NOT** diagnose or analyze.
- Filters do **NOT** distinguish right from wrong.





Filters "**ONLY**" help you see better, like a pair of sunglasses.

- Filters do **NOT** determine intent or cause.
- Filters do **NOT** determine consent or non-consent.
- Filters do **NOT** determine guilt or innocence.
- Filters do **NOT** diagnose or analyze.
- Filters do **NOT** distinguish right from wrong.



SDFI.com  
SDFI JPG Image

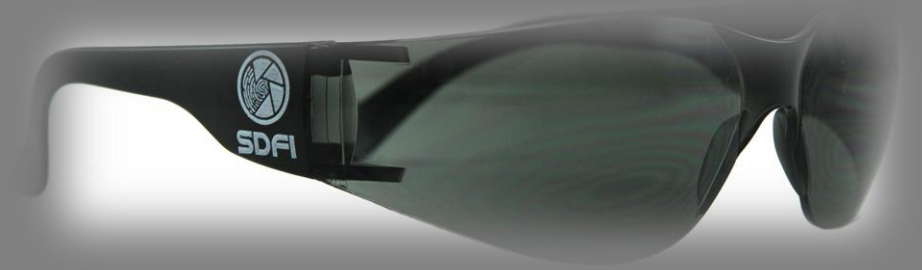


SDFI.com  
Viewed Through SDFI's Negative Invert Filter



Filters “**ONLY**” help you see better, like a pair of sunglasses.

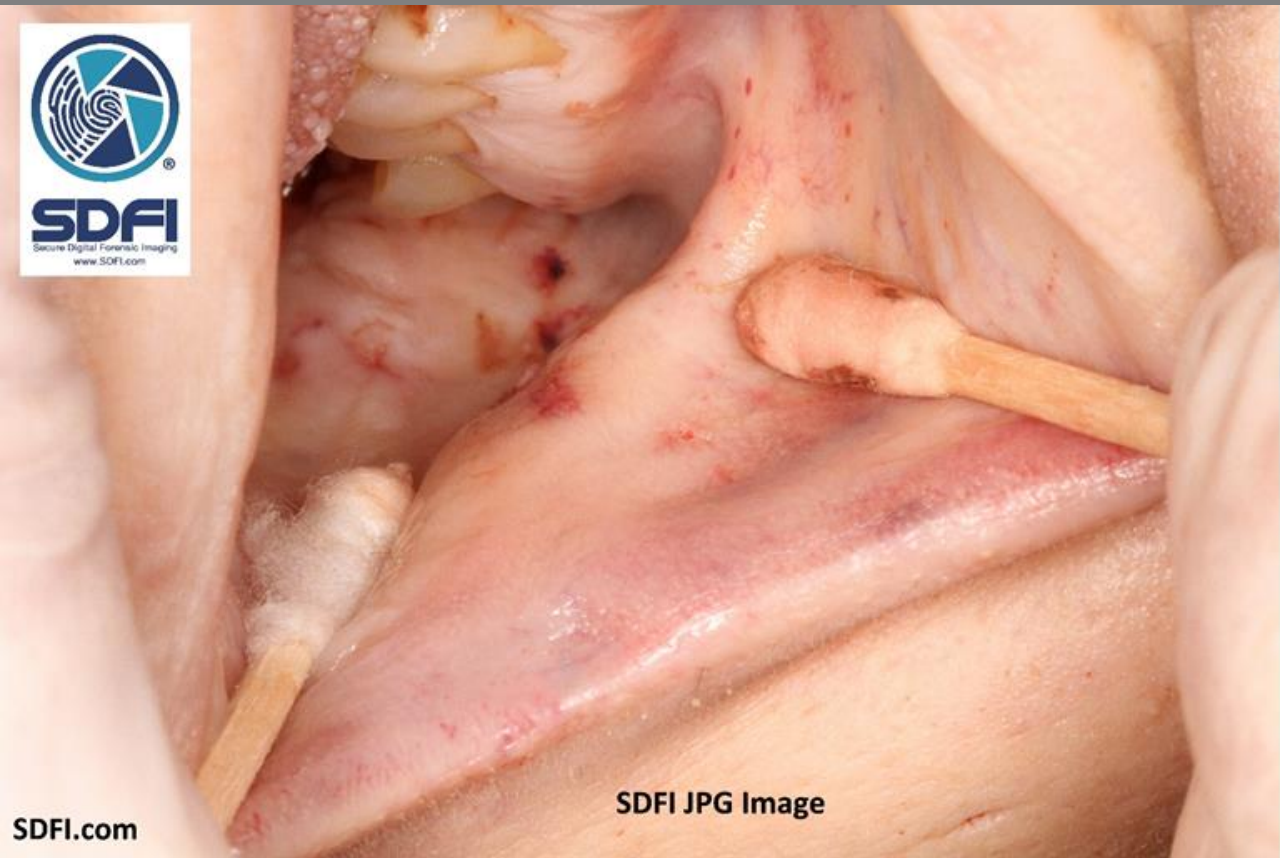
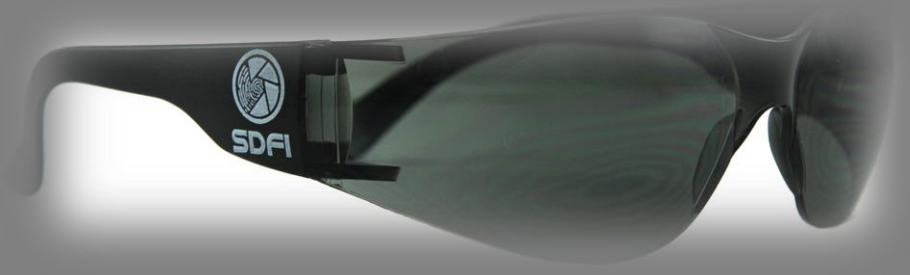
- Filters do **NOT** determine intent or cause.
- Filters do **NOT** determine consent or non-consent.
- Filters do **NOT** determine guilt or innocence.
- Filters do **NOT** diagnose or analyze.
- Filters do **NOT** distinguish right from wrong.





Filters “**ONLY**” help you see better, like a pair of sunglasses.

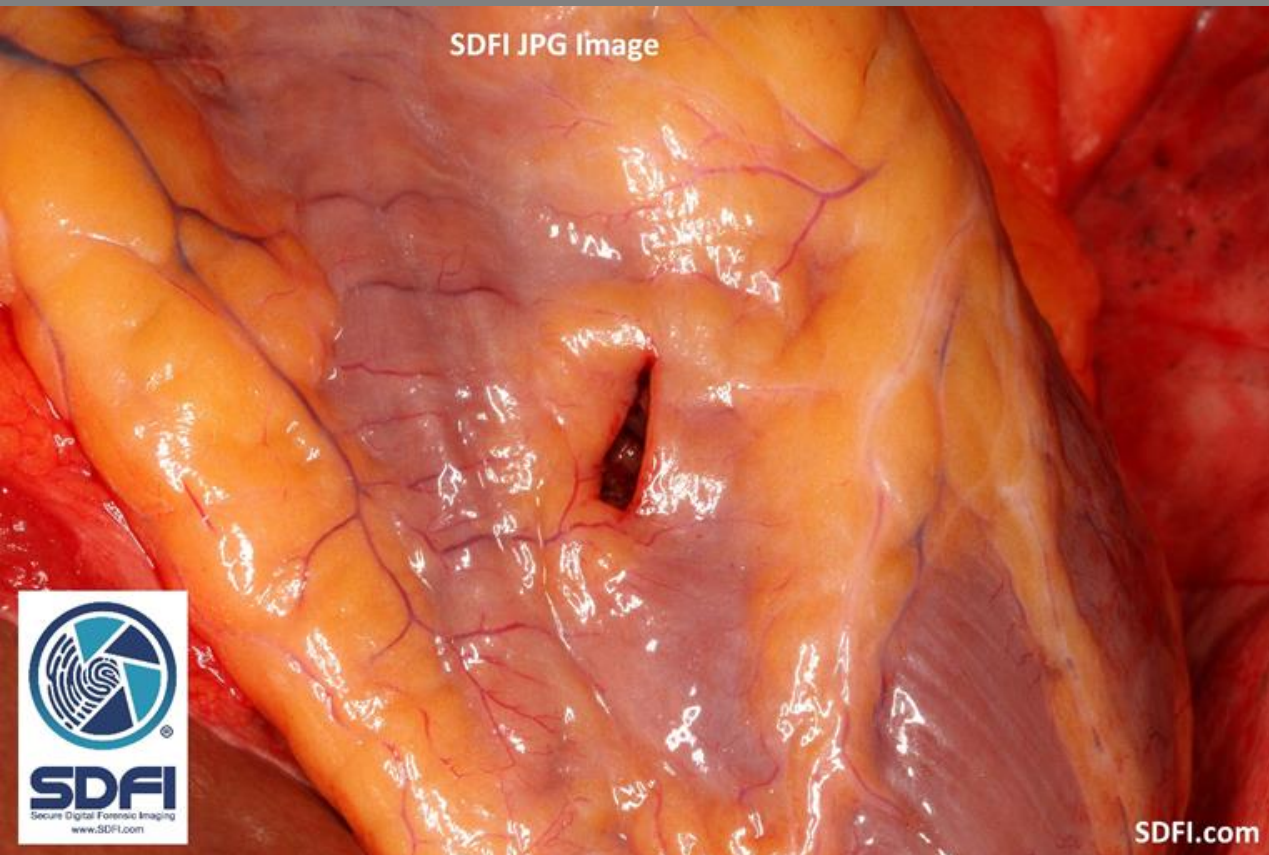
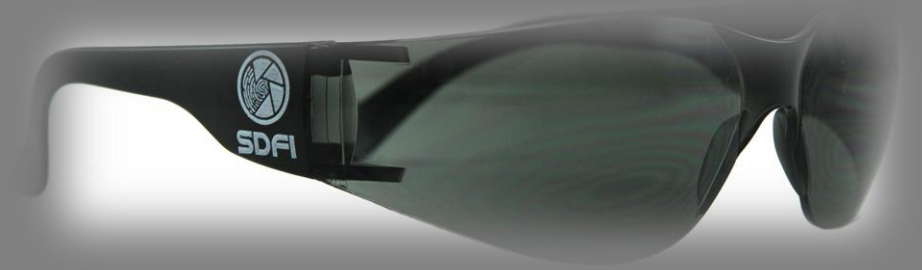
- Filters do **NOT** determine intent or cause.
- Filters do **NOT** determine consent or non-consent.
- Filters do **NOT** determine guilt or innocence.
- Filters do **NOT** diagnose or analyze.
- Filters do **NOT** distinguish right from wrong.





Filters “**ONLY**” help you see better, like a pair of sunglasses.

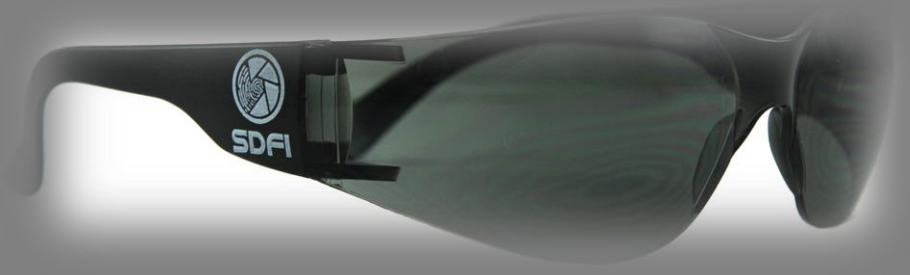
- Filters do **NOT** determine intent or cause.
- Filters do **NOT** determine consent or non-consent.
- Filters do **NOT** determine guilt or innocence.
- Filters do **NOT** diagnose or analyze.
- Filters do **NOT** distinguish right from wrong.





Filters “**ONLY**” help you see better, like a pair of sunglasses.

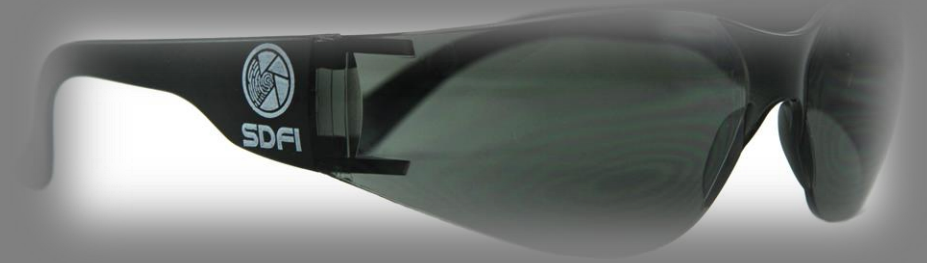
- Filters do **NOT** determine intent or cause.
- Filters do **NOT** determine consent or non-consent.
- Filters do **NOT** determine guilt or innocence.
- Filters do **NOT** diagnose or analyze.
- Filters do **NOT** distinguish right from wrong.





Filters “**ONLY**” help you see better, like a pair of sunglasses.

- Filters do **NOT** determine intent or cause.
- Filters do **NOT** determine consent or non-consent.
- Filters do **NOT** determine guilt or innocence.
- Filters do **NOT** diagnose or analyze.
- Filters do **NOT** distinguish right from wrong.



SDFI JPG Image

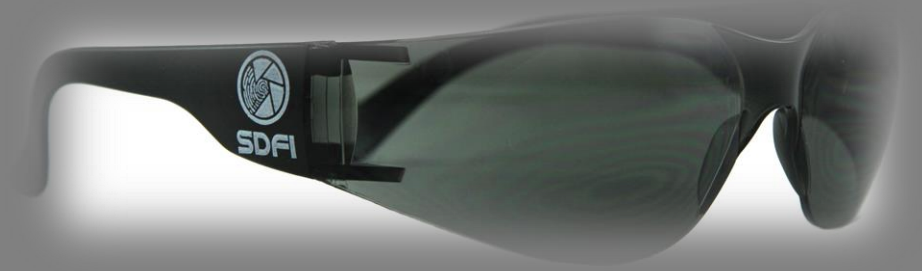


Viewed Through SDFI's Negative Invert Filter



Filters “ONLY” help you see better, like a pair of sunglasses.

- Filters do NOT determine intent or cause.
- Filters do NOT determine consent or non-consent.
- Filters do NOT determine guilt or innocence.
- Filters do NOT diagnose or analyze.
- Filters do NOT distinguish right from wrong.



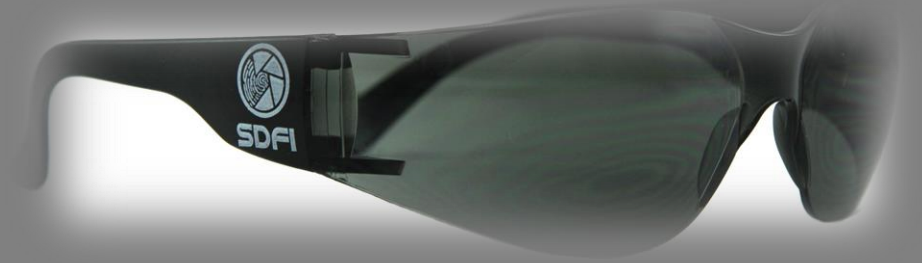
SDFI JPG Image

Viewed Through SDFI's Negative Invert Filter



Filters “**ONLY**” help you see better, like a pair of sunglasses.

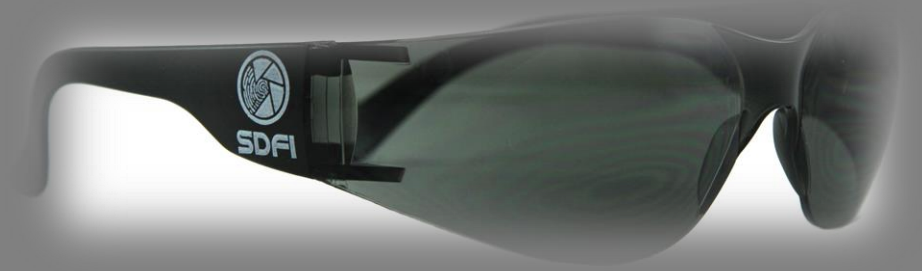
- Filters do **NOT** determine intent or cause.
- Filters do **NOT** determine consent or non-consent.
- Filters do **NOT** determine guilt or innocence.
- Filters do **NOT** diagnose or analyze.
- Filters do **NOT** distinguish right from wrong.





Filters “**ONLY**” help you see better, like a pair of sunglasses.

- Filters do **NOT** determine intent or cause.
- Filters do **NOT** determine consent or non-consent.
- Filters do **NOT** determine guilt or innocence.
- Filters do **NOT** diagnose or analyze.
- Filters do **NOT** distinguish right from wrong.



SDFI JPG Image

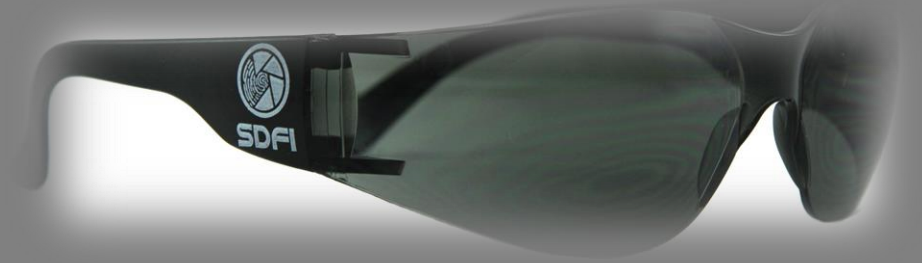


Viewed Through SDFI's Negative Invert Filter

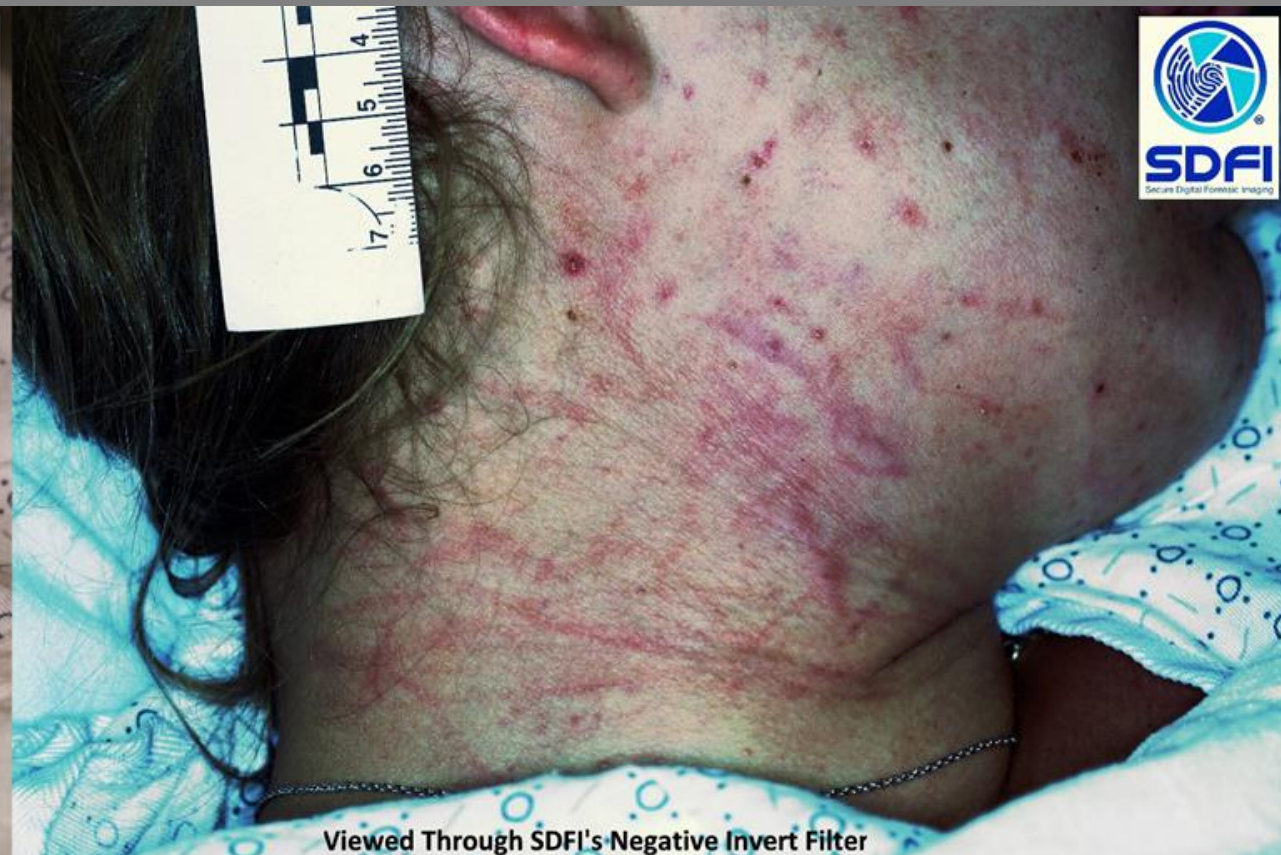


Filters “**ONLY**” help you see better, like a pair of sunglasses.

- Filters do **NOT** determine intent or cause.
- Filters do **NOT** determine consent or non-consent.
- Filters do **NOT** determine guilt or innocence.
- Filters do **NOT** diagnose or analyze.
- Filters do **NOT** distinguish right from wrong.



SDFI JPG Image

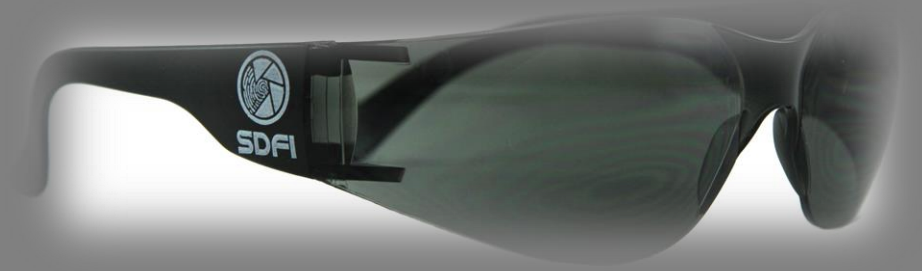


Viewed Through SDFI's Negative Invert Filter



Filters “**ONLY**” help you see better, like a pair of sunglasses.

- Filters do **NOT** determine intent or cause.
- Filters do **NOT** determine consent or non-consent.
- Filters do **NOT** determine guilt or innocence.
- Filters do **NOT** diagnose or analyze.
- Filters do **NOT** distinguish right from wrong.



SDFI JPG Image



Viewed Through SDFI's Negative Invert Filter



Filters “**ONLY**” help you see better, like a pair of sunglasses.

- Filters do **NOT** determine intent or cause.
- Filters do **NOT** determine consent or non-consent.
- Filters do **NOT** determine guilt or innocence.
- Filters do **NOT** diagnose or analyze.
- Filters do **NOT** distinguish right from wrong.





Filters “**ONLY**” help you see better, like a pair of sunglasses.

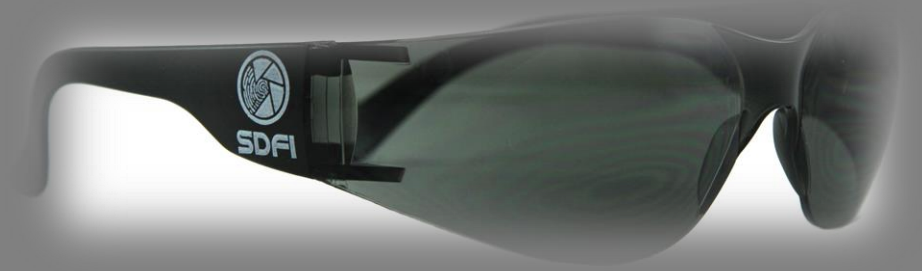
- Filters do **NOT** determine intent or cause.
- Filters do **NOT** determine consent or non-consent.
- Filters do **NOT** determine guilt or innocence.
- Filters do **NOT** diagnose or analyze.
- Filters do **NOT** distinguish right from wrong.





Filters “**ONLY**” help you see better, like a pair of sunglasses.

- Filters do **NOT** determine intent or cause.
- Filters do **NOT** determine consent or non-consent.
- Filters do **NOT** determine guilt or innocence.
- Filters do **NOT** diagnose or analyze.
- Filters do **NOT** distinguish right from wrong.



SDFI JPG Image

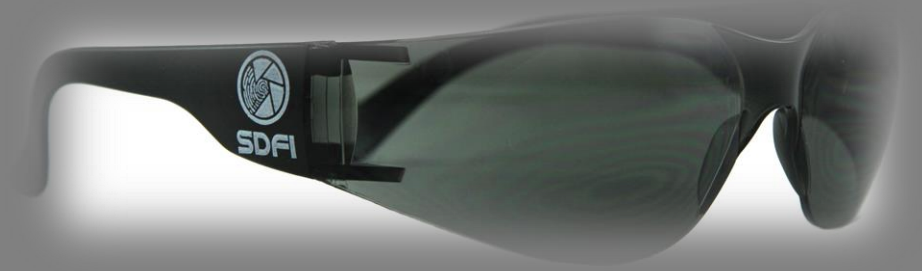


Viewed Through SDFI's Negative Invert Filter



Filters “**ONLY**” help you see better, like a pair of sunglasses.

- Filters do **NOT** determine intent or cause.
- Filters do **NOT** determine consent or non-consent.
- Filters do **NOT** determine guilt or innocence.
- Filters do **NOT** diagnose or analyze.
- Filters do **NOT** distinguish right from wrong.



SDFI JPG Image



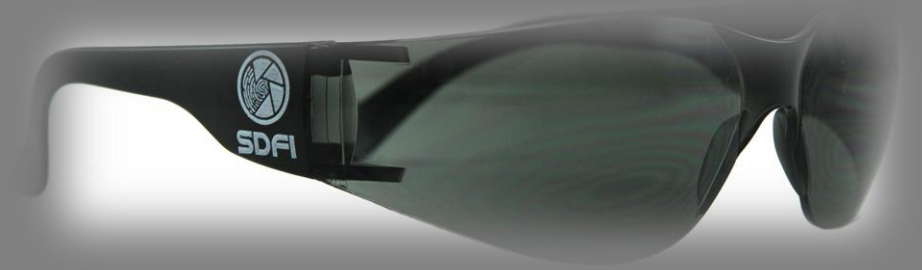
Viewed Through SDFI's Negative Invert Filter





Filters “**ONLY**” help you see better, like a pair of sunglasses.

- Filters do **NOT** determine intent or cause.
- Filters do **NOT** determine consent or non-consent.
- Filters do **NOT** determine guilt or innocence.
- Filters do **NOT** diagnose or analyze.
- Filters do **NOT** distinguish right from wrong.



SDFI JPG Image



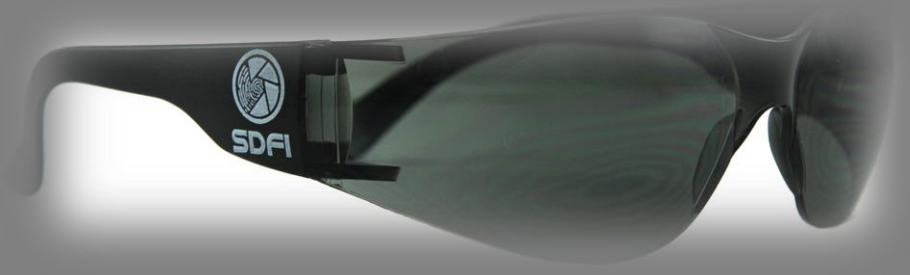
Viewed Through SDFI's Negative Invert Filter





Filters “ONLY” help you see better, like a pair of sunglasses.

- Filters do NOT determine intent or cause.
- Filters do NOT determine consent or non-consent.
- Filters do NOT determine guilt or innocence.
- Filters do NOT diagnose or analyze.
- Filters do NOT distinguish right from wrong.



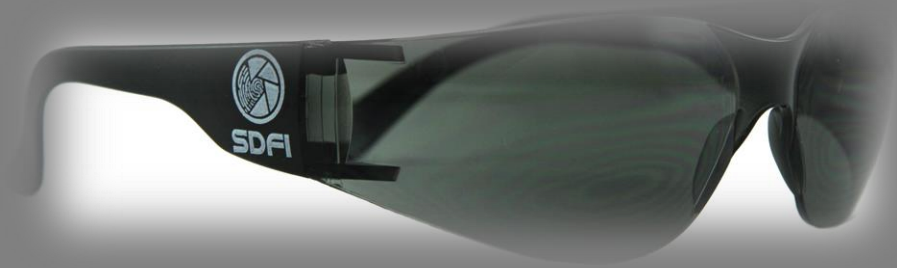
SDFI JPG Image

Viewed Through SDFI's Negative Invert Filter



Filters “**ONLY**” help you see better, like a pair of sunglasses.

- Filters do **NOT** determine intent or cause.
- Filters do **NOT** determine consent or non-consent.
- Filters do **NOT** determine guilt or innocence.
- Filters do **NOT** diagnose or analyze.
- Filters do **NOT** distinguish right from wrong.



SDFI JPG Image

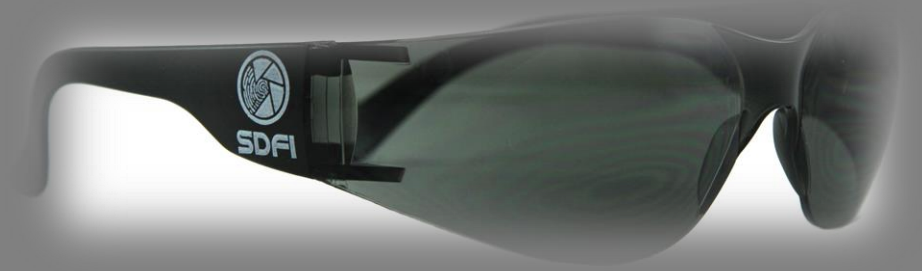


Viewed Through SDFI's Negative Invert Filter



Filters “**ONLY**” help you see better, like a pair of sunglasses.

- Filters do **NOT** determine intent or cause.
- Filters do **NOT** determine consent or non-consent.
- Filters do **NOT** determine guilt or innocence.
- Filters do **NOT** diagnose or analyze.
- Filters do **NOT** distinguish right from wrong.



SDFI JPG Image

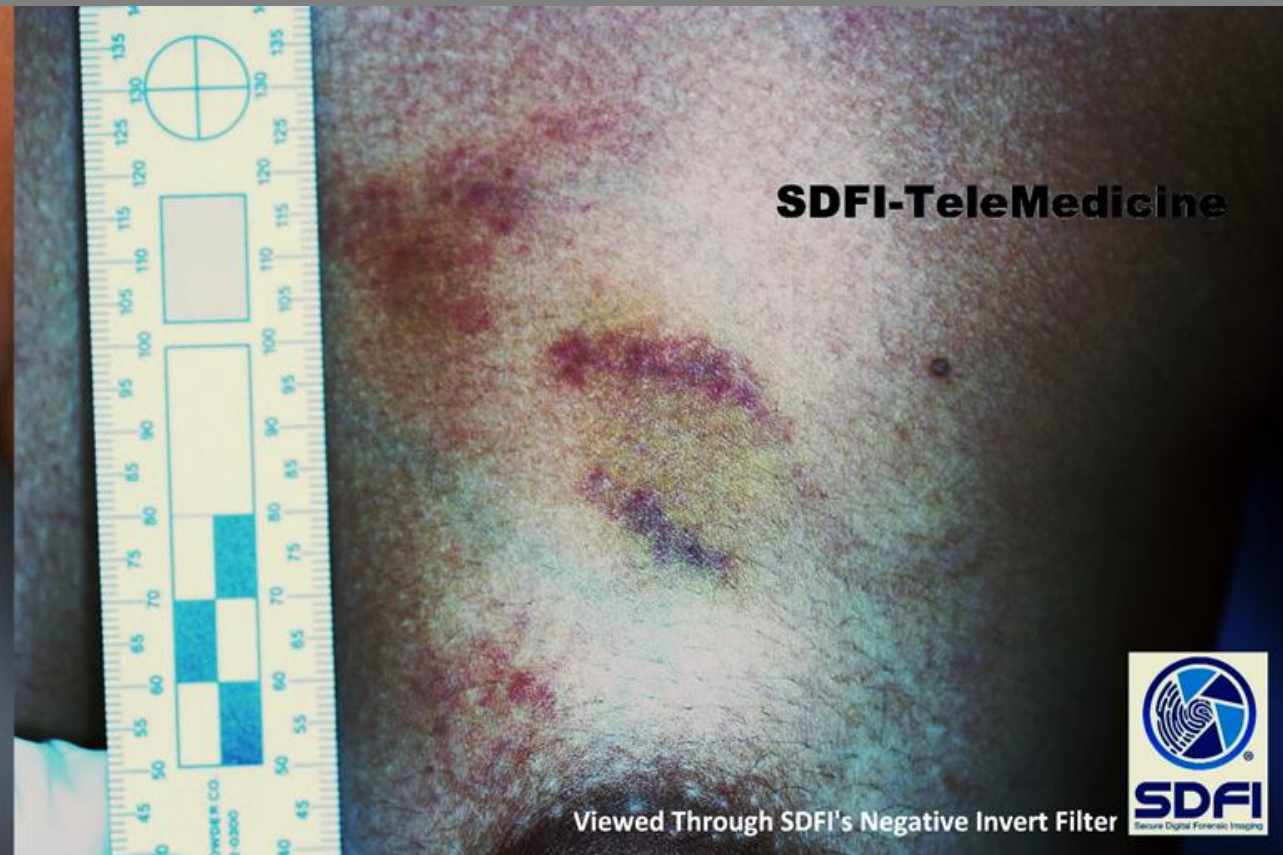
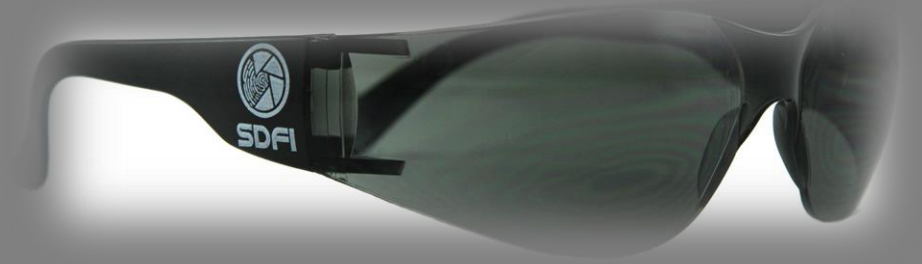


Viewed Through SDFI's Negative Invert Filter



Filters “**ONLY**” help you see better, like a pair of sunglasses.

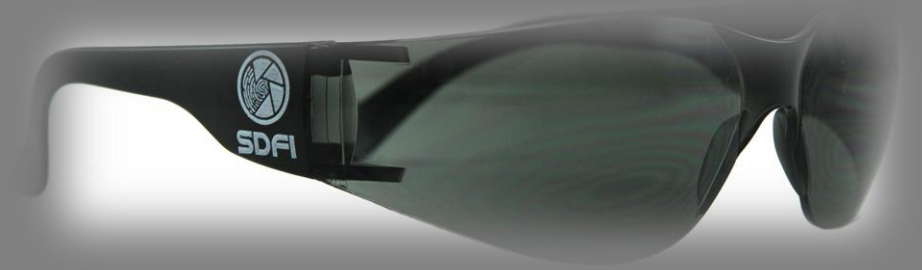
- Filters do **NOT** determine intent or cause.
- Filters do **NOT** determine consent or non-consent.
- Filters do **NOT** determine guilt or innocence.
- Filters do **NOT** diagnose or analyze.
- Filters do **NOT** distinguish right from wrong.





Filters “**ONLY**” help you see better, like a pair of sunglasses.

- Filters do **NOT** determine intent or cause.
- Filters do **NOT** determine consent or non-consent.
- Filters do **NOT** determine guilt or innocence.
- Filters do **NOT** diagnose or analyze.
- Filters do **NOT** distinguish right from wrong.



SDFI JPG Image



Viewed Through SDFI's Negative Invert Filter